



**Catalogue**  
[archant.co.nz](http://archant.co.nz)





Frost Tower, Texas  
Cladding  
Clement - Stainless Steel | Brass



## archant **WOVENPANEL®**

Archant Wovenpanel® is a decorative woven wire mesh range for architects and interior designers. Wovenpanel® can be used widely throughout your designs, from intricate design highlights to large-scale applications to create an extraordinary and bespoke aesthetic.





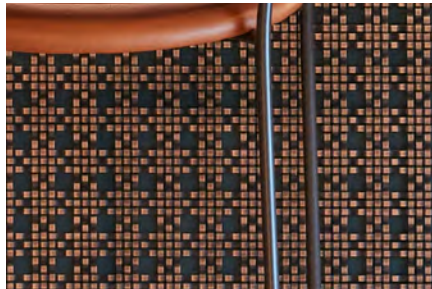
# Why Archant Wovenpanel®?

Archant Wovenpanel® is a decorative woven wire mesh range for architects and interior designers. Wovenpanel® can be used widely throughout your designs, from intricate design highlights to large-scale applications to create an extraordinary and bespoke aesthetic.

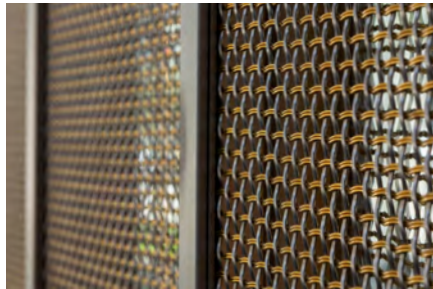
With over 100 years of experience in producing woven and welded mesh, Wovenpanel® sheets are manufactured in USA using the finest base materials and advanced finishing processes enabling a collection that is superior in quality and diverse in its finishes.



Range of styles stocked in NZ,  
100's more available



Freedom in design application

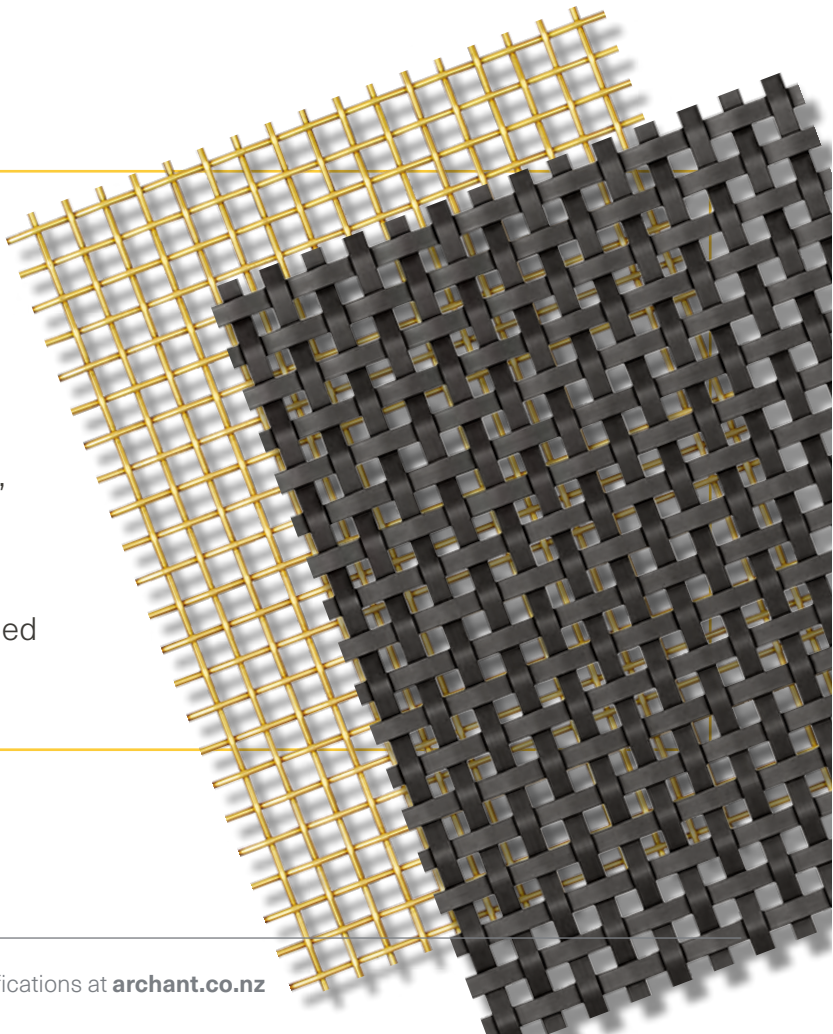


Bespoke fabrication & installation  
offering

## LEARN MORE ABOUT ARCHANT WOVENPANEL®

Learn how to use Archant Wovenpanel® by visiting our website. Our detailed design specifications will provide you with the resources and knowledge you need to confidently specify Wovenpanel®. Offering the greatest design freedom, and with a wide range of mesh styles available, Archant Wovenpanel® is your ultimate decorative wire mesh solution.

Visit [archant.co.nz/wovenpanel](http://archant.co.nz/wovenpanel) for detailed specifications, imagery and information.



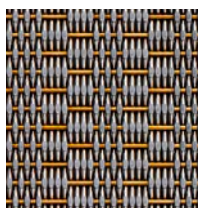
# Our Wovenpanel® Range



**Armand**  
Black Copper, p. 302



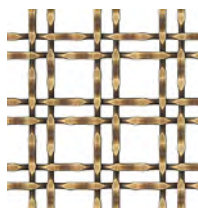
**Armand**  
Brushed Brass, p. 303



**Ashley**  
Stainless Steel  
| Brass, p. 304



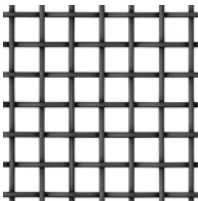
**Bexley**  
Antique Brass, p. 306



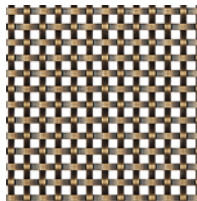
**Brixton**  
Antique Brass, p. 307



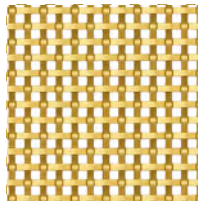
**Bromley**  
Brushed Brass, p. 308



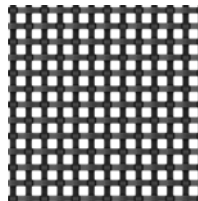
**Bromley**  
Dark Oxide, p. 309



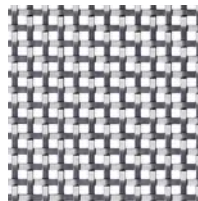
**Chadwell**  
Antique Brass, p. 310



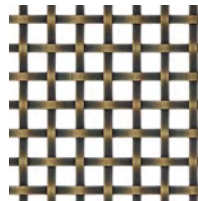
**Chadwell**  
Brushed Brass, p. 310



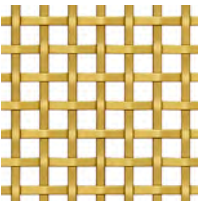
**Chadwell**  
Dark Oxide, p. 312



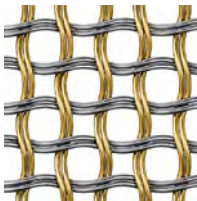
**Chadwell**  
Stainless Steel, p. 312



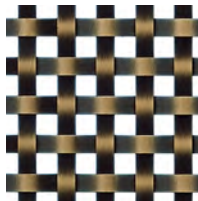
**Chafford**  
Antique Brass, p. 314



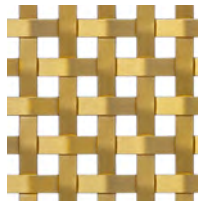
**Chafford**  
Brushed Brass, p. 314



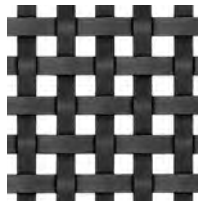
**Clement**  
Stainless Steel |  
Brass, p. 316



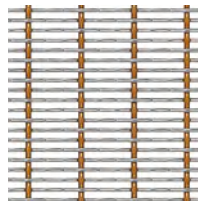
**Crofton**  
Antique Brass, p. 320



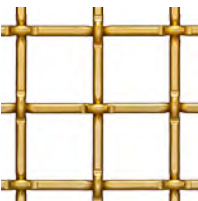
**Crofton**  
Brushed Brass, p. 320



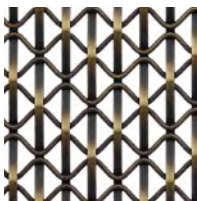
**Crofton**  
Dark Oxide, p. 322



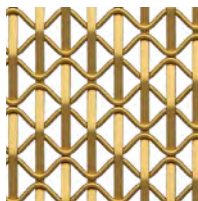
**Kenton**  
Stainless Steel |  
Bronze, p. 323



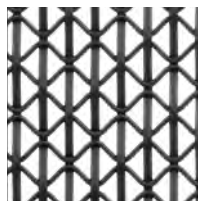
**Loxford**  
Brushed Brass, p. 324



**Staten**  
Antique Brass, p. 326



**Staten**  
Brushed Brass, p. 326

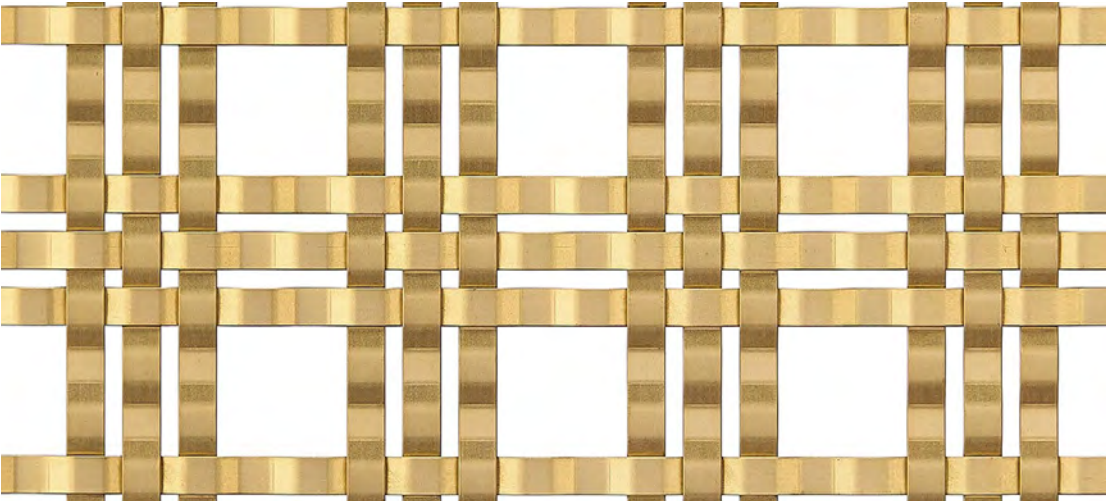


**Staten**  
Dark Oxide, p. 327



# Armand

Armand, Brushed Brass



Code  
70.8919.BB

Material  
Plain Steel

Finish  
Brushed Brass

Style  
Square

Weight/sq m.  
16.17 kg

Sheet Size (mm)  
L 2400 x W 1000

% open  
34.50%

Use  
Interior

Armand, Black Copper

Code  
70.8920.BC

Material  
Plain Steel

Finish  
Black Copper

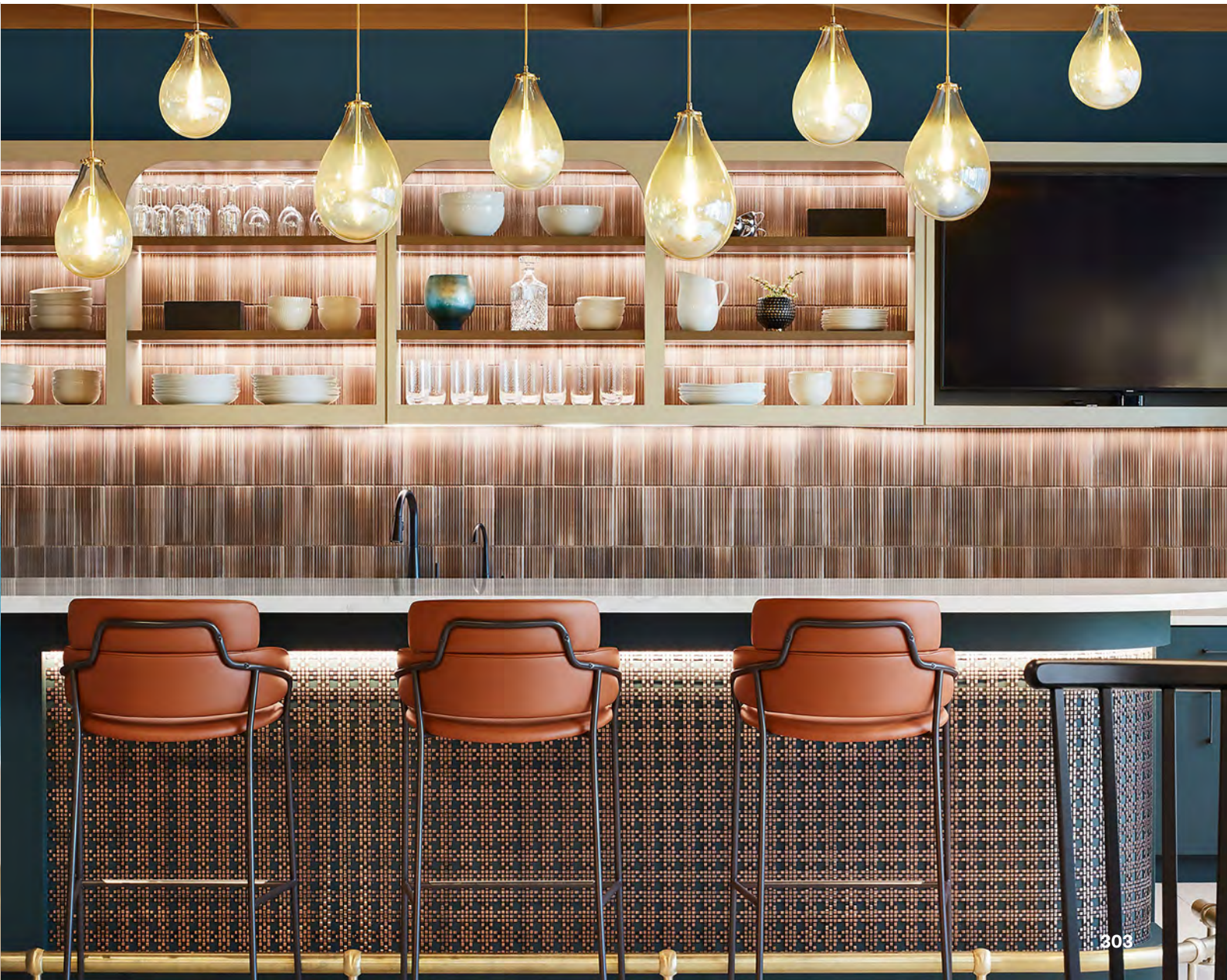
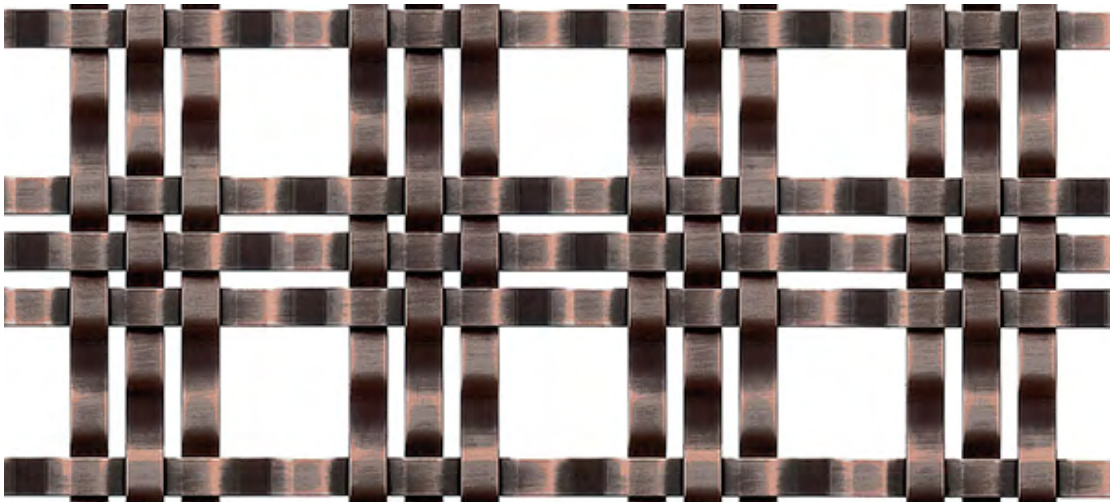
Style  
Square

Weight/sq m.  
16.17 kg

Sheet Size (mm)  
L 2400 x W 1000

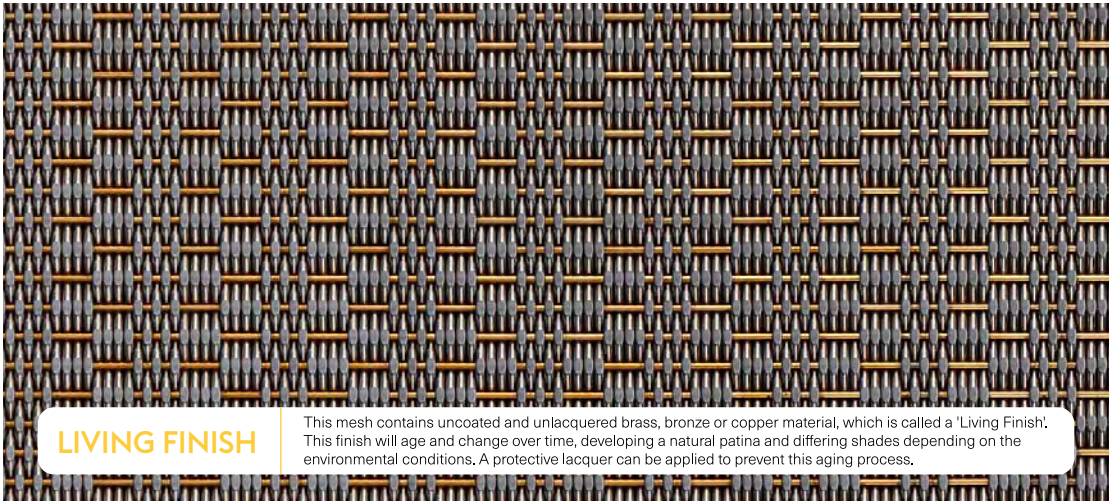
% open  
34.50%

Use  
Interior





# Ashley



## LIVING FINISH

This mesh contains uncoated and unlacquered brass, bronze or copper material, which is called a 'Living Finish'. This finish will age and change over time, developing a natural patina and differing shades depending on the environmental conditions. A protective lacquer can be applied to prevent this aging process.

Code  
**70.8923.SS**

Material  
**Stainless Steel | Brass**

Finish  
**Stainless Steel | Brass**

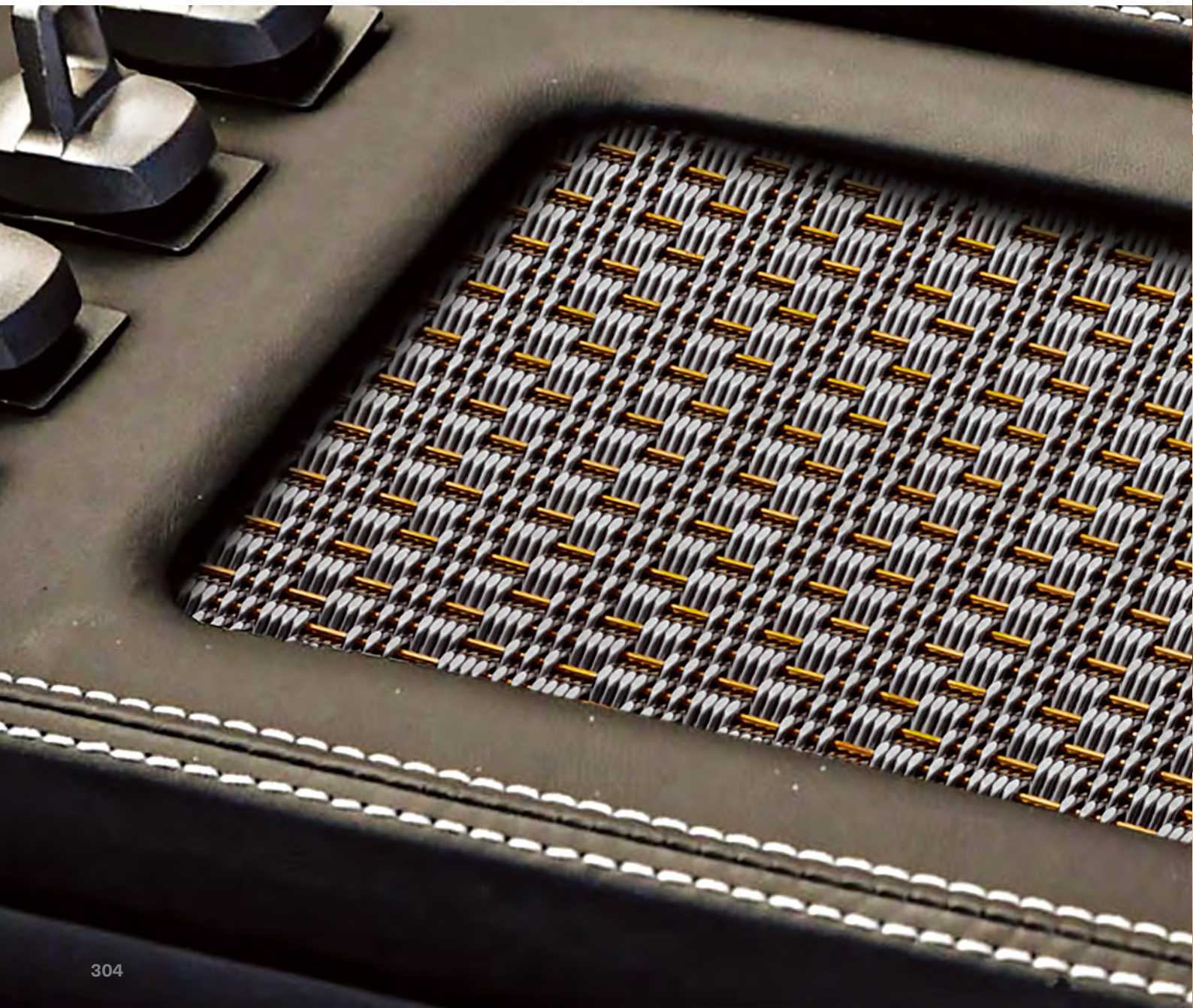
Style  
**Rectangular**

Weight/sq m.  
**37.84 kg**

Sheet Size (mm)  
**L 2400 x W 1000**

% open  
**0.00%**

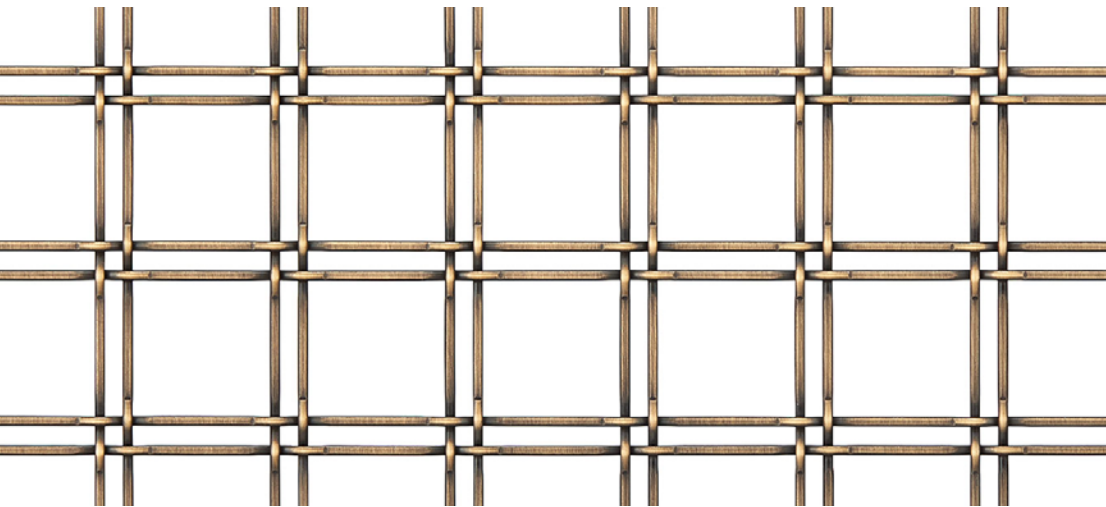
Use  
**Interior**



Pictured: Armand, Brushed Brass



Bexley



Code  
**70.8918.AB**

Material  
**Plain Steel**

Finish  
**Antique Brass**

Style  
**Square**

Weight/sq m.  
**6.56 kg**

Sheet Size (mm)  
**L 2400 x W 1000**

% open  
**78.30%**

Use  
**Interior**

Brixton

Code  
**70.8917.AB**

Material  
**Plain Steel**

Finish  
**Antique Brass**

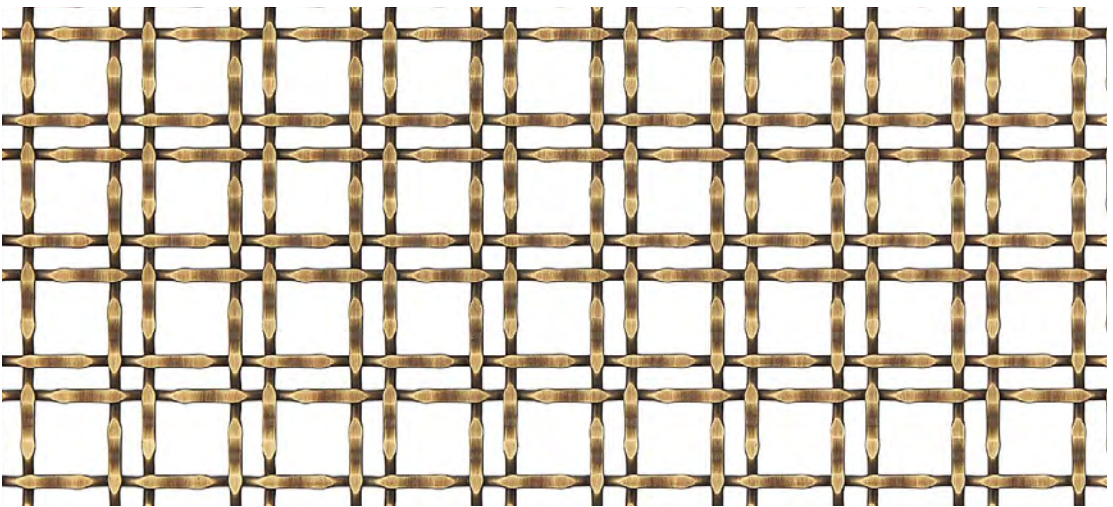
Style  
**Square**

Weight/sq m.  
**11.95 kg**

Sheet Size (mm)  
**L 2400 x W 1000**

% open  
**61.00%**

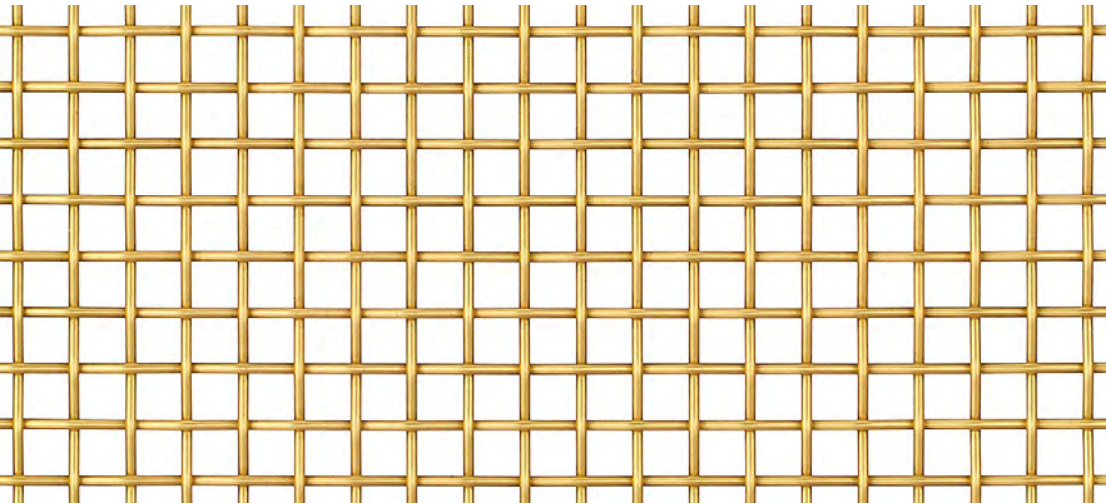
Use  
**Interior**





# Bromley

## Bromley, Brushed Brass



Code  
**70.8921.BB**

Material  
**Plain Steel**

Finish  
**Brushed Brass**

Style  
**Square**

Weight/sq m.  
**12.88 kg**

Sheet Size (mm)  
**L 2400 x W 1000**

% open  
**63.50%**

Use  
**Interior**

## Bromley, Dark Oxide

Code  
**70.8922.BL**

Material  
**Plain Steel**

Finish  
**Dark Oxide**

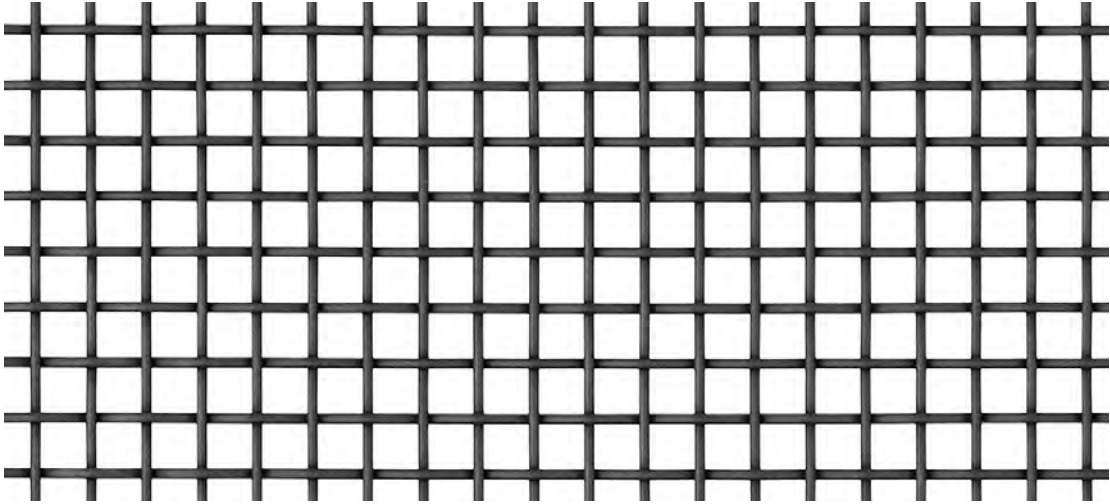
Style  
**Square**

Weight/sq m.  
**12.88 kg**

Sheet Size (mm)  
**L 2400 x W 1000**

% open  
**63.50%**

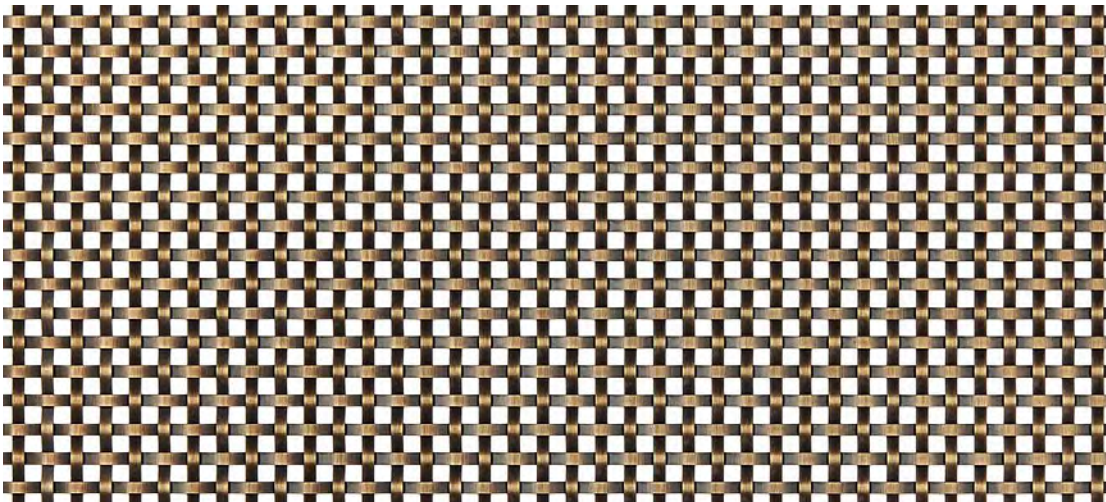
Use  
**Interior**





# Chadwell

## Chadwell, Antique Brass



Code  
**70.8906.AB**

Material  
**Plain Steel**

Finish  
**Antique Brass**

Style  
**Square**

Weight/sq m.  
**14.30 kg**

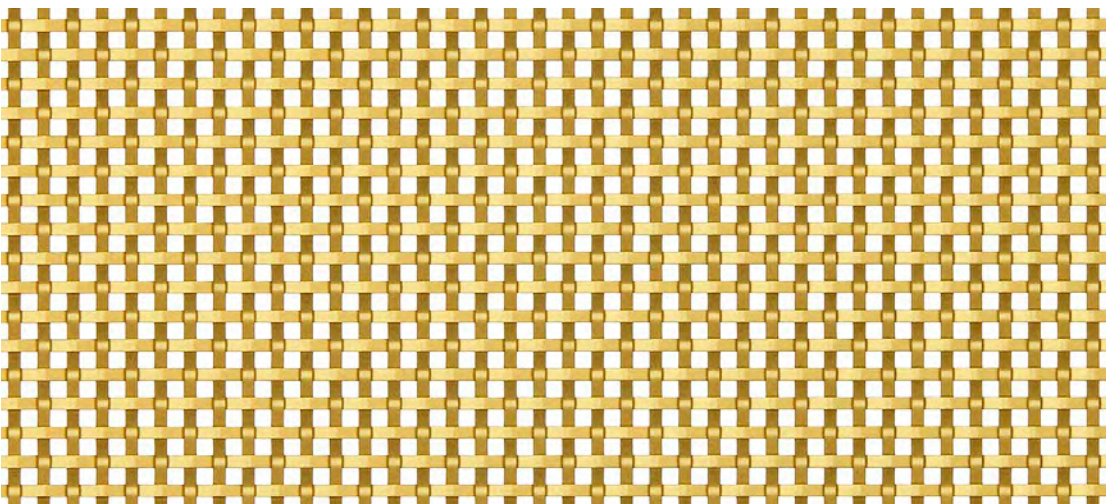
Sheet Size (mm)  
**L 2400 x W 1000**

% open  
**25.00%**

Use  
**Interior**



## Chadwell, Brushed Brass



Code  
**70.8905.BB**

Material  
**Plain Steel**

Finish  
**Brushed Brass**

Style  
**Square**

Weight/sq m.  
**14.30 kg**

Sheet Size (mm)  
**L 2400 x W 1000**

% open  
**25.00%**

Use  
**Interior**

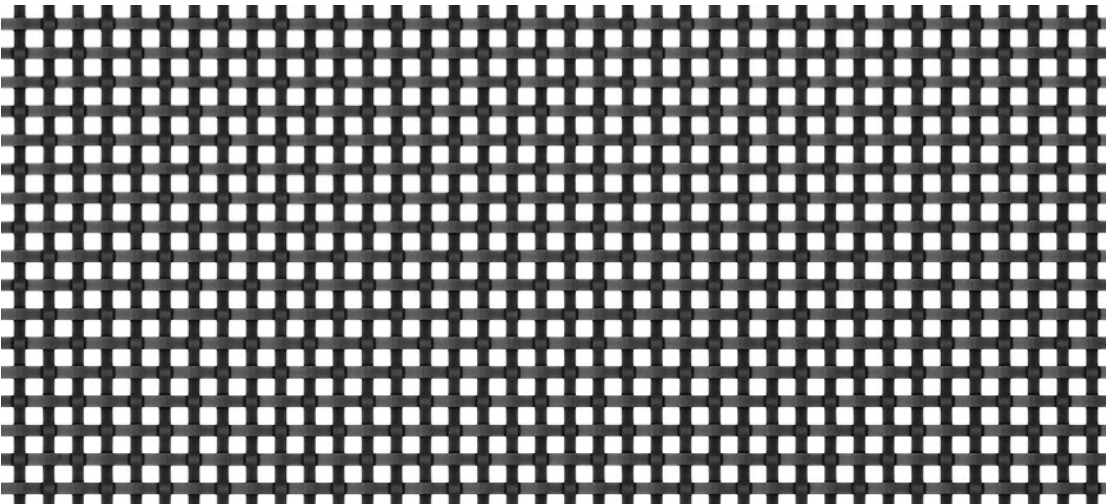


Rangehood  
Chadwell, Antique Brass



# Chadwell

## Chadwell, Dark Oxide



Code  
**70.8908.BL**

Material  
**Plain Steel**

Finish  
**Dark Oxide**

Style  
**Square**

Weight/sq m.  
**14.30 kg**

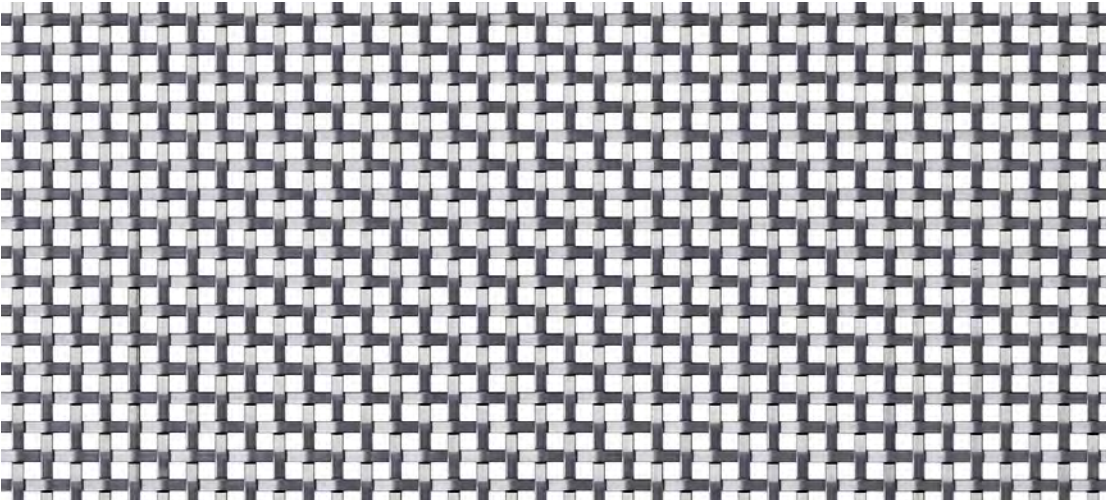
Sheet Size (mm)  
**L 2400 x W 1000**

% open  
**25.00%**

Use  
**Interior**



## Chadwell, Stainless Steel



Code  
**70.8907.ST**

Material  
**Plain Steel**

Finish  
**Stainless Steel**

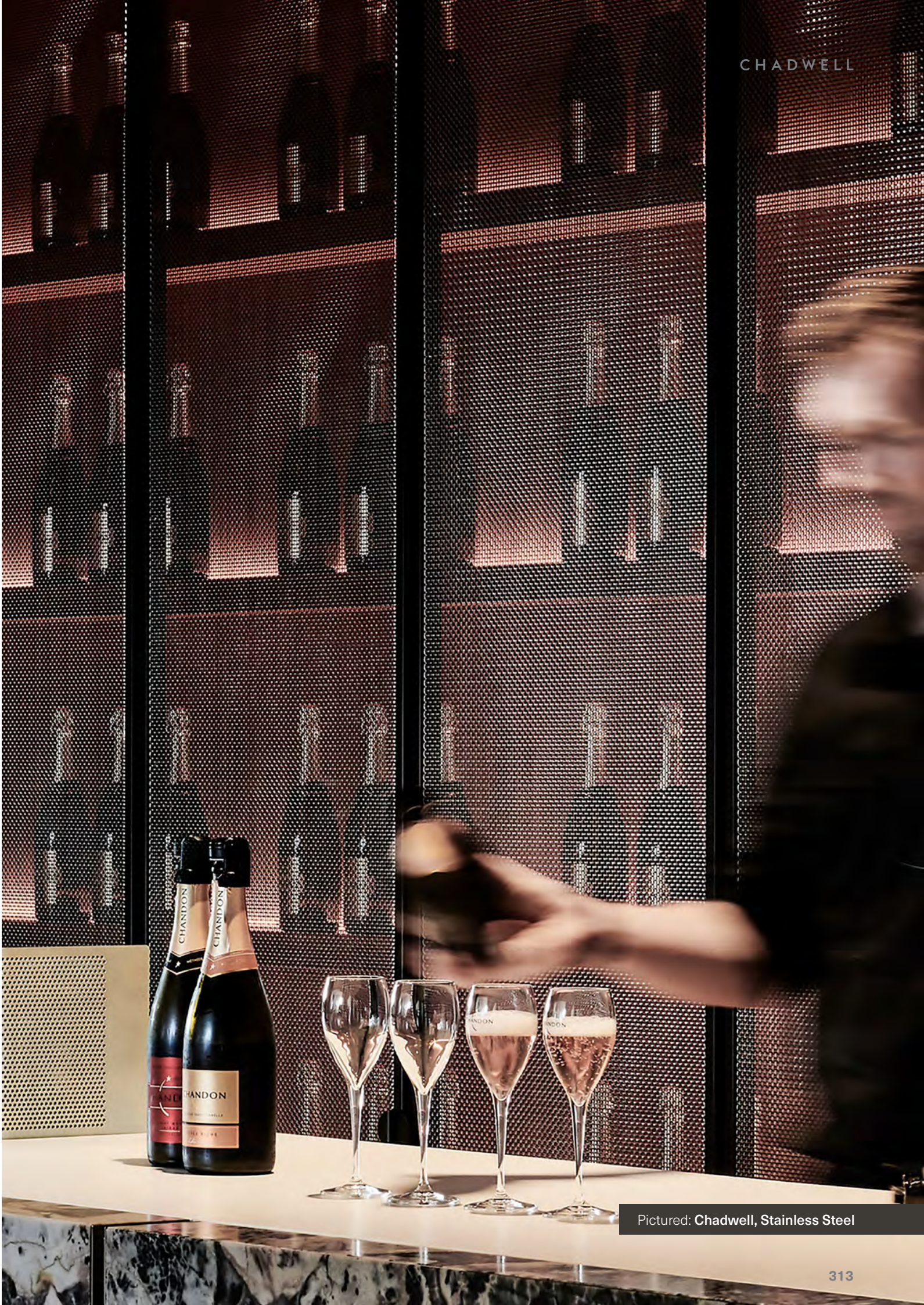
Style  
**Square**

Weight/sq m.  
**14.30 kg**

Sheet Size (mm)  
**L 2400 x W 1000**

% open  
**25.00%**

Use  
**Interior**

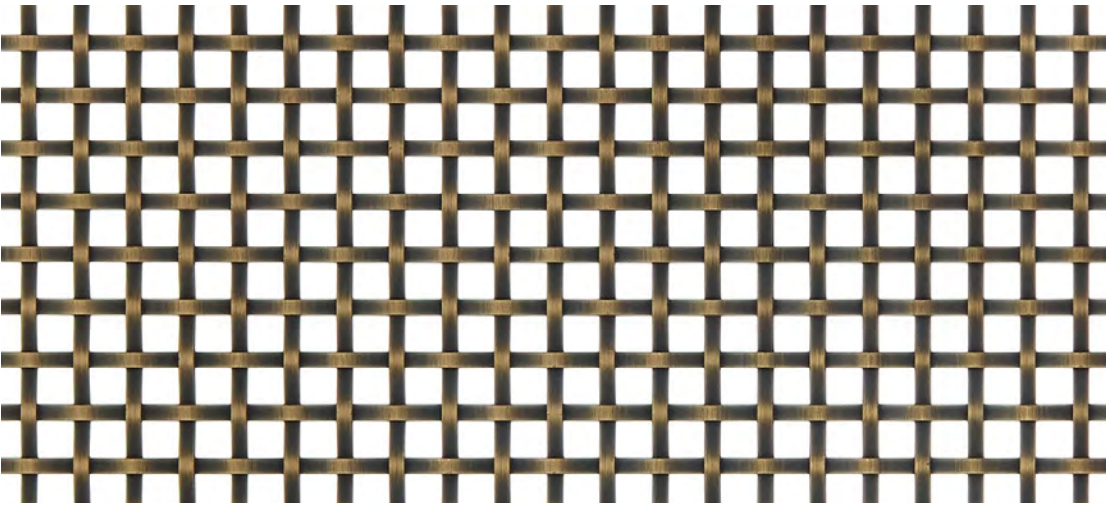


Pictured: Chadwell, Stainless Steel



# Chafford

## Chafford, Antique Brass



Code  
**70.8909.AB**

Material  
**Plain Steel**

Finish  
**Antique Brass**

Style  
**Square**

Weight/sq m.  
**16.75 kg**

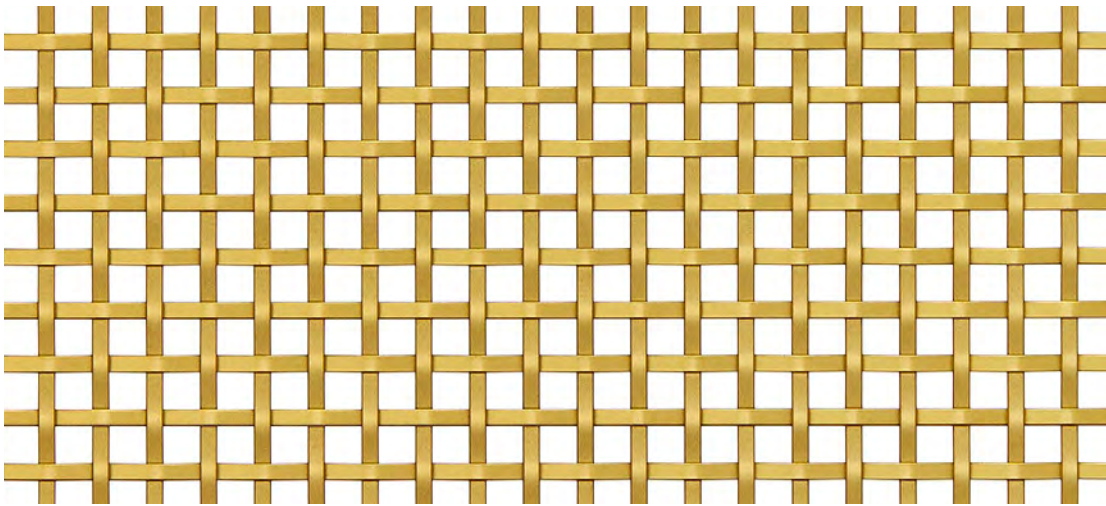
Sheet Size (mm)  
**L 2400 x W 1000**

% open  
**44.40%**

Use  
**Interior**



## Chafford, Brushed Brass



Code  
**70.8910.BB**

Material  
**Plain Steel**

Finish  
**Brushed Brass**

Style  
**Square**

Weight/sq m.  
**16.75 kg**

Sheet Size (mm)  
**L 2400 x W 1000**

% open  
**44.40%**

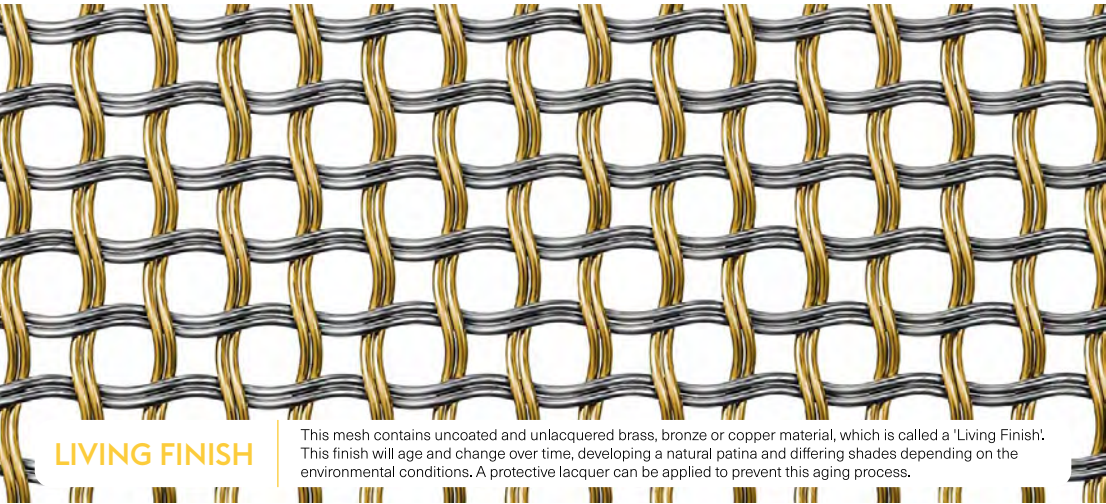
Use  
**Interior**



Pictured: Chafford, Dark Oxide



# Clement



## LIVING FINISH

This mesh contains uncoated and unlacquered brass, bronze or copper material, which is called a 'Living Finish'. This finish will age and change over time, developing a natural patina and differing shades depending on the environmental conditions. A protective lacquer can be applied to prevent this aging process.

Code  
**70.8916.SS**

Material  
**Stainless Steel | Brass**

Finish  
**Stainless Steel | Brass**

Style  
**Square**

Weight/sq m.  
**20.15 kg**

Sheet Size (mm)  
**L 2400 x W 1000**

% open  
**41.40%**

Use  
**Interior**



Lincoln Square Suites, London  
Space Divider  
Clement - Stainless Steel



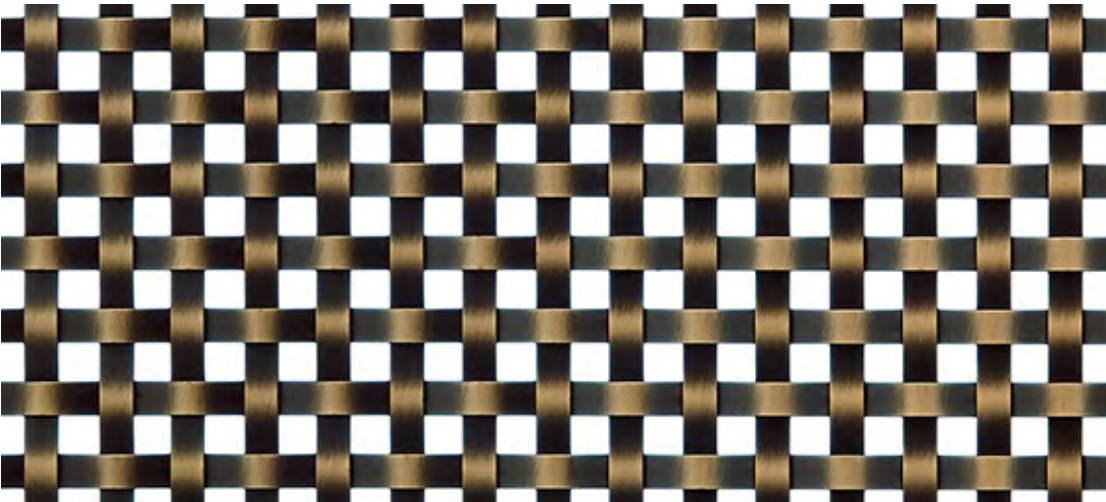


Frost Tower, Texas  
Cladding  
Clement - Stainless Steel | Brass



# Crofton

## Crofton, Antique Brass



Code  
**70.8903.AB**

Material  
**Plain Steel**

Finish  
**Antique Brass**

Style  
**Square**

Weight/sq m.  
**24.72 kg**

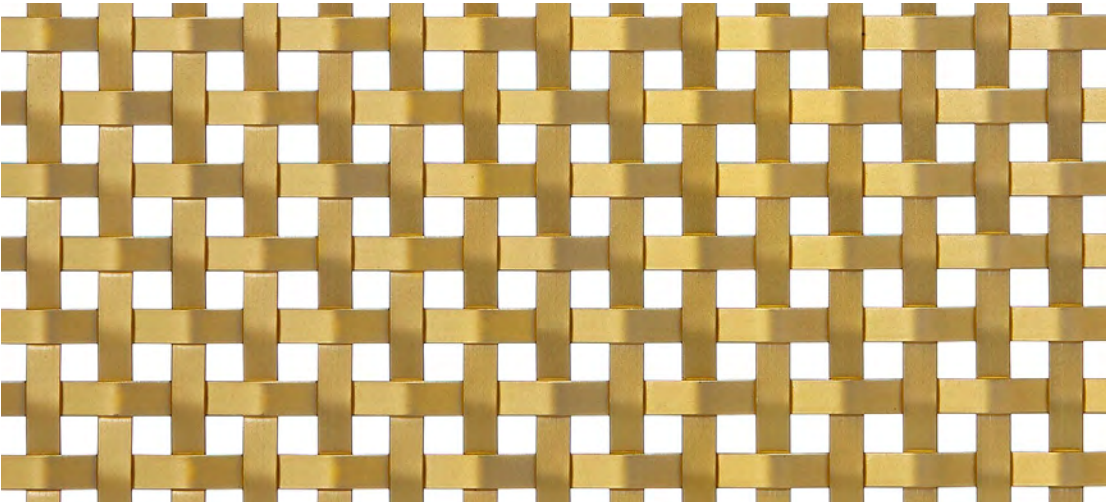
Sheet Size (mm)  
**L 2400 x W 1000**

% open  
**25.90%**

Use  
**Interior**



## Crofton, Brushed Brass



Code  
**70.8904.BB**

Material  
**Plain Steel**

Finish  
**Brushed Brass**

Style  
**Square**

Weight/sq m.  
**24.72 kg**

Sheet Size (mm)  
**L 2400 x W 1000**

% open  
**25.90%**

Use  
**Interior**

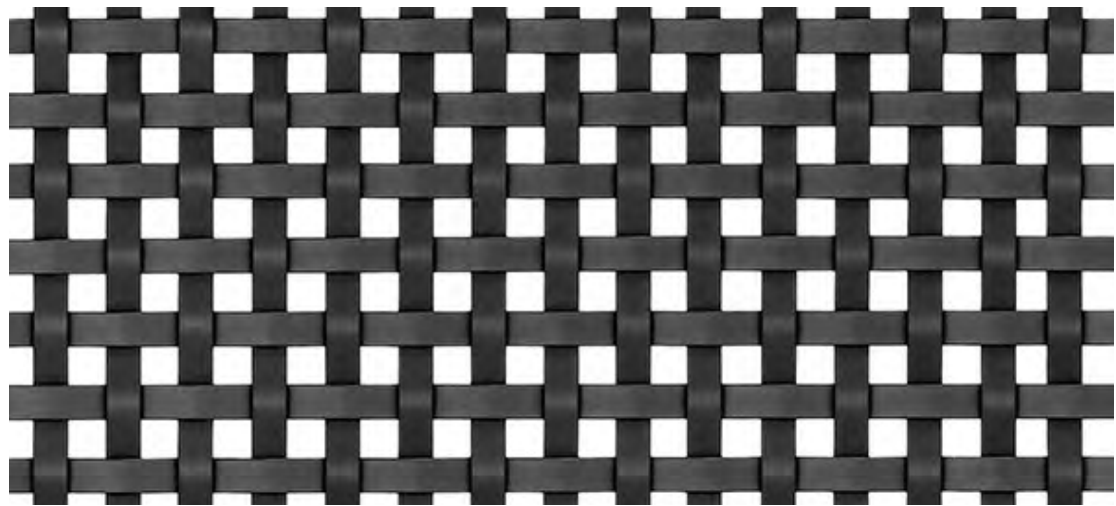


Clarion Hotel  
Cabinetry & Divider  
Crofton, Brushed Brass



# Crofton

## Crofton, Dark Oxide



Code  
**70.8902.BL**

Material  
**Plain Steel**

Finish  
**Dark Oxide**

Style  
**Square**

Weight/sq m.  
**24.72 kg**

Sheet Size (mm)  
**L 2400 x W 1000**

% open  
**25.90%**

Use  
**Interior**

# Kenton

Code  
**70.8924.SS**

Material  
**Stainless Steel | Bronze**

Finish  
**Stainless Steel | Bronze**

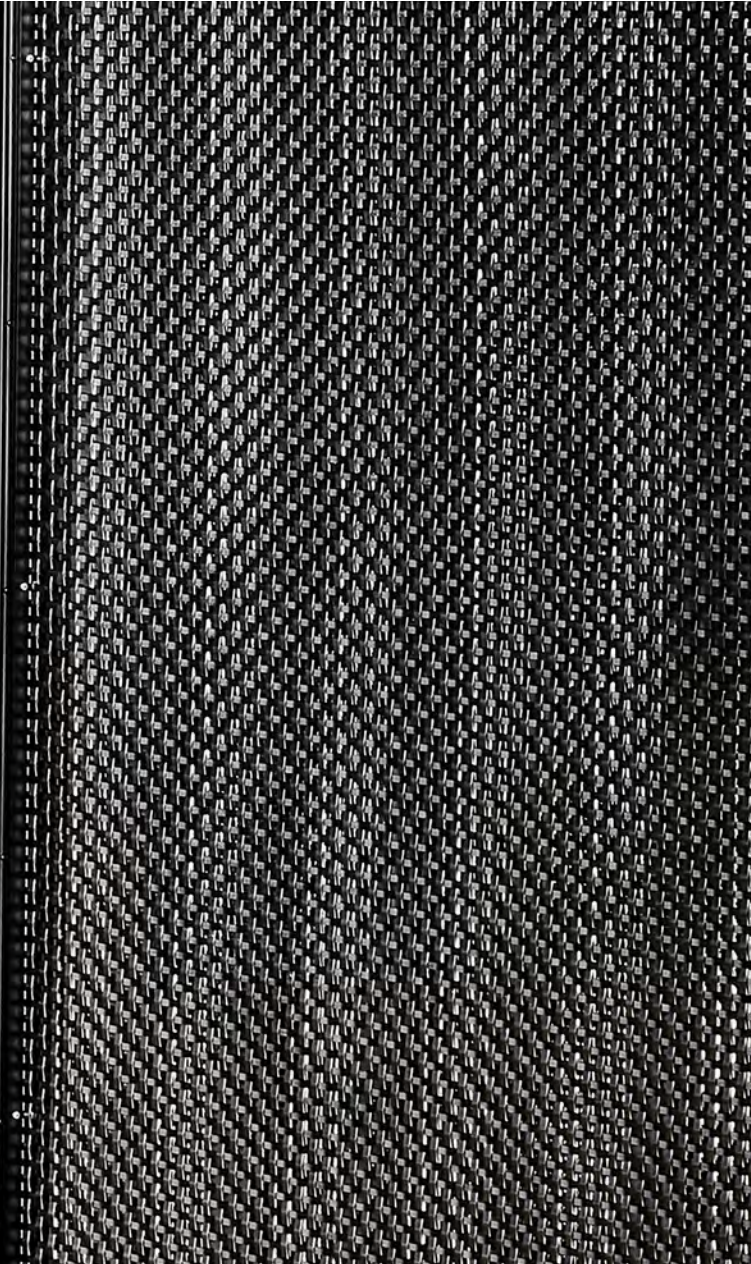
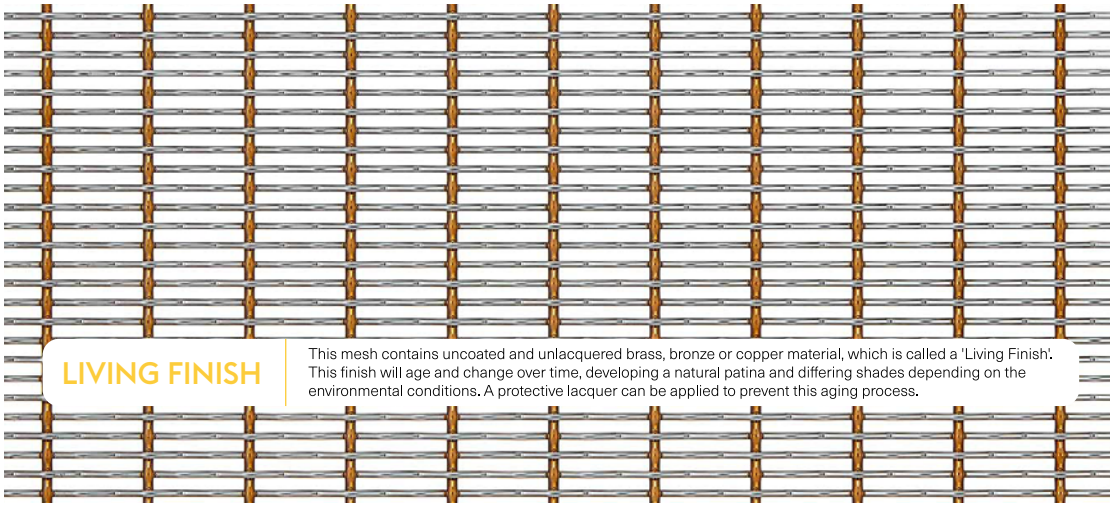
Style  
**Rectangular**

Weight/sq m.  
**12.3 kg**

Sheet Size (mm)  
**L 2400 x W 1000**

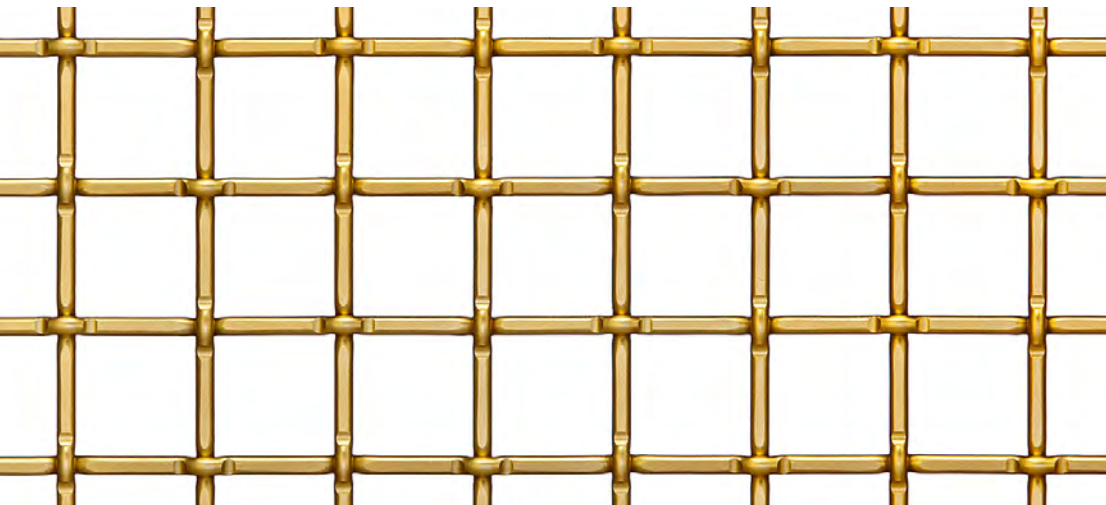
% open  
**58.90%**

Use  
**Interior**





# Loxford



Code  
**70.8915.BB**

Material  
**Plain Steel**

Finish  
**Brushed Brass**

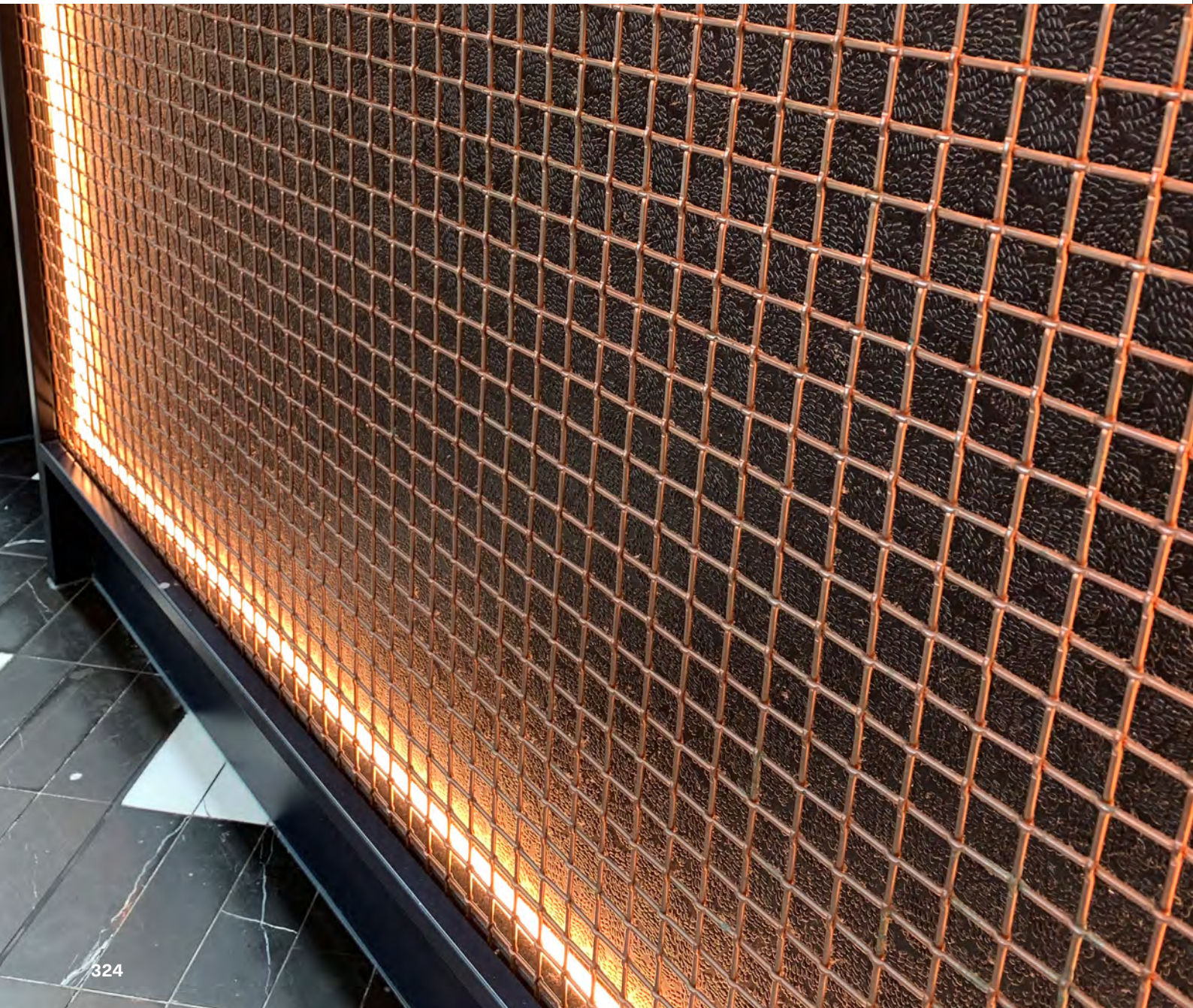
Style  
**Square**

Weight/sq m.  
**14.41 kg**

Sheet Size (mm)  
**L 2400 x W 1000**

% open  
**74.80%**

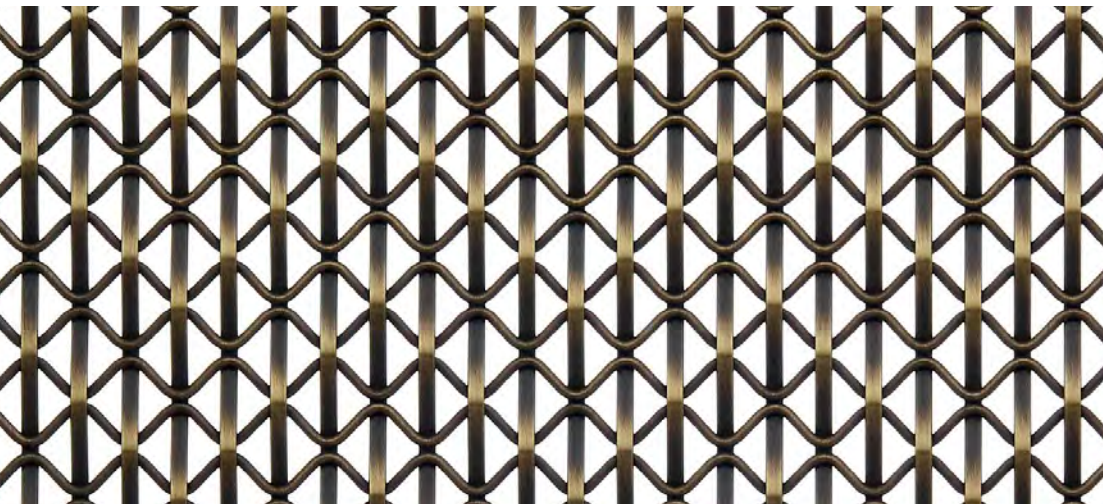
Use  
**Interior**





# Staten

## Staten, Antique Brass



Code  
**70.8913.AB**

Material  
**Plain Steel**

Finish  
**Antique Brass**

Style  
**Square**

Weight/sq m.  
**16.75 kg**

Sheet Size (mm)  
**L 2400 x W 1000**

% open  
**48.20%**

Use  
**Interior**

## Staten, Dark Oxide

Code  
**70.8912.BL**

Material  
**Plain Steel**

Finish  
**Dark Oxide**

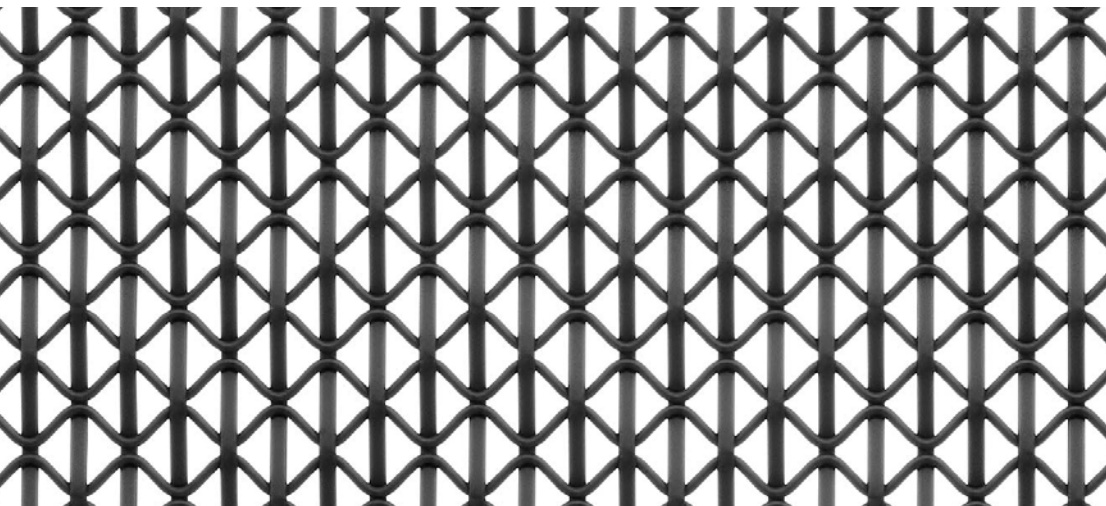
Style  
**Square**

Weight/sq m.  
**16.75 kg**

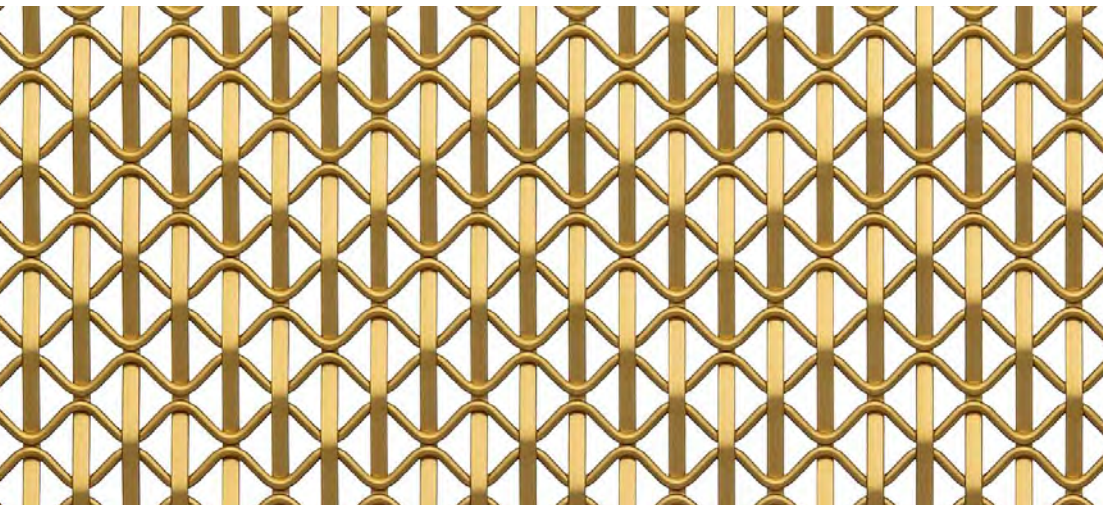
Sheet Size (mm)  
**L 2400 x W 1000**

% open  
**48.20%**

Use  
**Interior**



## Staten, Brushed Brass



Code  
**70.8914.BB**

Material  
**Plain Steel**

Finish  
**Brushed Brass**

Style  
**Square**

Weight/sq m.  
**16.75 kg**

Sheet Size (mm)  
**L 2400 x W 1000**

% open  
**48.20%**

Use  
**Interior**





