

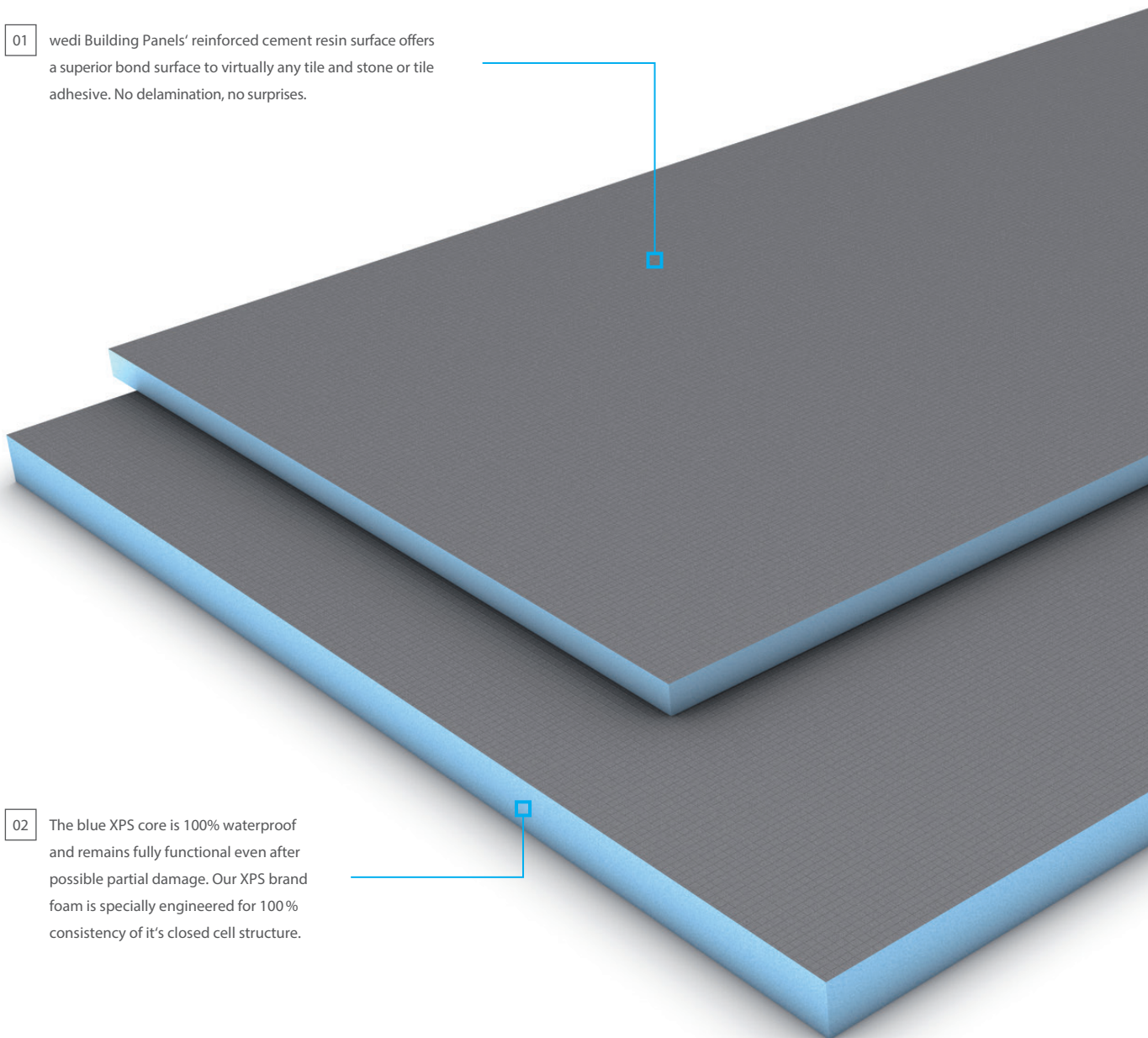
# Technical Handbook

Waterproofing System Solutions for kitchens



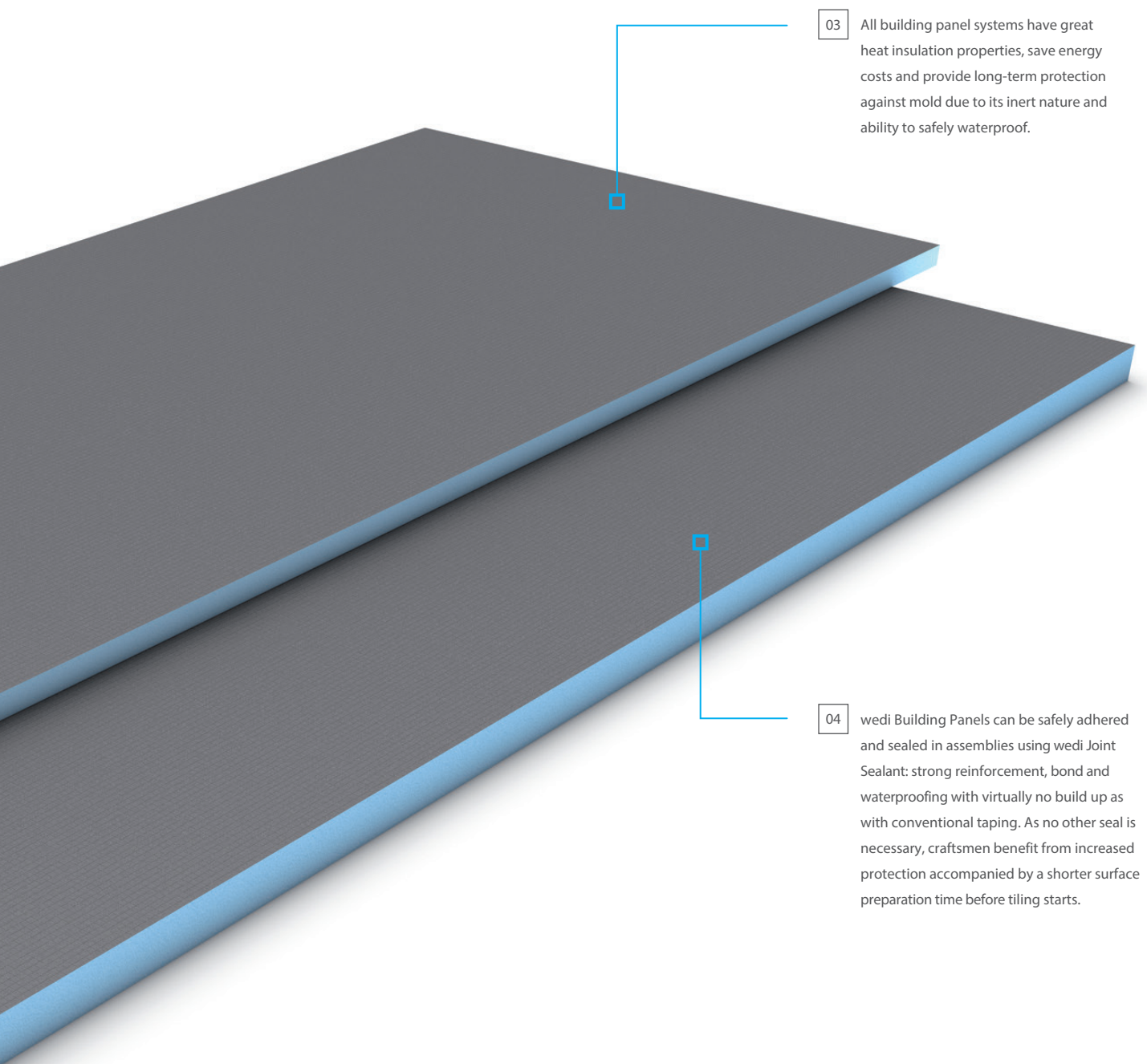
# wedi – Only real with a blue core

- 01 wedi Building Panels' reinforced cement resin surface offers a superior bond surface to virtually any tile and stone or tile adhesive. No delamination, no surprises.



- 02 The blue XPS core is 100% waterproof and remains fully functional even after possible partial damage. Our XPS brand foam is specially engineered for 100% consistency of its closed cell structure.





03 All building panel systems have great heat insulation properties, save energy costs and provide long-term protection against mold due to its inert nature and ability to safely waterproof.

04 wedi Building Panels can be safely adhered and sealed in assemblies using wedi Joint Sealant: strong reinforcement, bond and waterproofing with virtually no build up as with conventional taping. As no other seal is necessary, craftsmen benefit from increased protection accompanied by a shorter surface preparation time before tiling starts.



## What does wedi INSIDE offer?

The principle of wedi inside is simple: high-quality tile installations require a substrate that is 100 % secure. That's why craftsmen have put their faith in wedi quality for decades, especially as a substrate underneath tiles. 100% waterproof and 100% secure – signed, sealed and guaranteed by wedi.

## The Ultimate backer board

wedi Building Panels have a blue core made from extruded polystyrene rigid foam that is manufactured without the use of CFC foaming agents and contains no dangerous fire retardants such as HBCD. This makes wedi building panels an ideal base for any type of thinset adhered tile or stone. wedi Building Panels can be applied to practically any load-bearing substrate, are waterproof throughout, insulating, versatile in its use in field customized applications, light and extremely robust and strong. It is also a formidable tile backer board for use on walls, floors, countertops and many more applications.



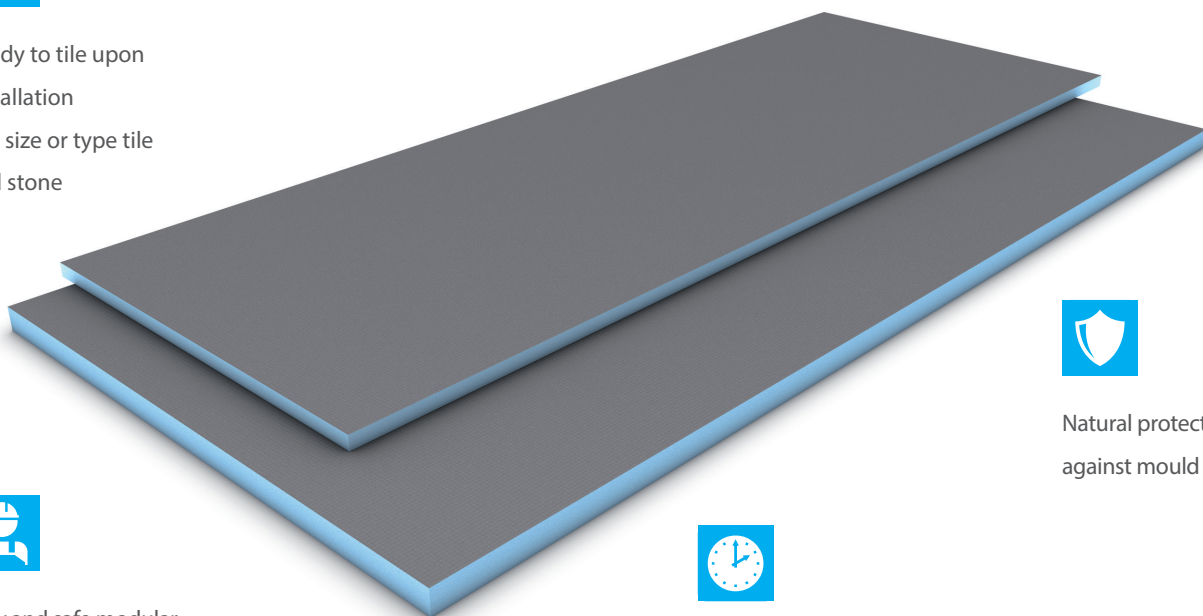
Ready to tile upon  
installation  
any size or type tile  
and stone



100% waterproof - with  
manufacturer's guarantee



Multiple customisable  
product sizes



Easy and safe modular  
installation



Fastest installation of waterproof,  
custom kitchens in the industry.



Natural protection  
against mould

- 100% waterproof blue core, made from wedi specific extruded polystyrene closed cell foam which is manufactured without the use of CFC and contains no HBCD
- Available in multiple thicknesses and sizes
- Compatible with virtually any stable substructure
- Versatile, limitless installation capabilities
- Strong, due to cement resin with embedded mesh reinforcement – no chance for delamination
- Superior bond to any tile using any thinset mortars on cement or epoxy basis
- Extremely light weight, easy and clean to cut
- Includes thermal insulating properties
- Protects against mold and mildew naturally
- Perfect, even surface for mosaics, as well as large size or thin body tile

## For builders & architects

- Inspiration and ideas for individual design possibilities within a system
- Secure and coordinated problem-solvers, also able to be implemented on difficult substructures
- Fast-track renovations and new residential or commercial construction
- Clean and modular, easy to plan
- Long-term protection from moisture and mold, especially in wet rooms
- Significant reduction in energy costs thanks to integrated heat insulation
- Masterspecs available on [wedicorp.com](http://wedicorp.com)
- CEU classes offered in-house and as webinars

## For contractors

- System technology saves time and money
- All solutions are 100 % waterproof and mold proof – with manufacturer's guarantee
- Perfected complete solutions with over 30 years of practical experience
- Premium Warranty Protection Programs: 10, 15, 20 years of extensive incident coverage
- The modular system and the possibilities of easy and clean customizing creates new areas of activity – and therefore additional business
- Underlayment solutions to perfectly prepare any suitable substrate for tile, stone and many other finishes
- Competitive advantages through new ideas for bathroom and spa projects
- Hands-on and online certification programs

"My guys are using only wedi"

Bryan Baessler,  
host of "Leave it to Bryan" and  
"House of Bryan" known from  
HGTV and DIY Network Channels.







# Building Panel Applications

## The Ultimate Tile Backerboard

wedi Building Panels are so much more than a simple tile backer board and offer endless installation opportunities. Available in a wide variety of thicknesses and sizes, they are compatible with virtually any substructure. wedi Building Panels are lightweight, internally waterproof and dimensionally stable, making them fast, clean and simple to work with. The blue waterproof core is made from wedi specific extruded polystyrene foam that is manufactured without the use of CFC foaming agents and contains no dangerous fire retardants such as HBCD, reinforced with fiberglass mesh on both sides and coated with synthetic polymer resin mortar which fully embeds the mesh layer resulting in the panel's strength and the ability to develop highest adhesion strength to virtually any type of thinset mortar. The embedded mesh eliminates the risk of delamination of installation layers.

The wedi Building Panel combines the benefits of the latest manufacturing technology and material quality with sound and traditional benefits our trades enjoy. wedi Building Panels are waterproof, lightweight, easy and clean to cut and still incredibly strong and bond friendly for use with any type of thinset mortar application. The wedi Building Panel can be tiled with all types of ceramic, glass or stone tile whether they are mosaic or large format tiles. Especially large and thin tile benefits of the durability of the wedi Building Panel and the even surface it provides.



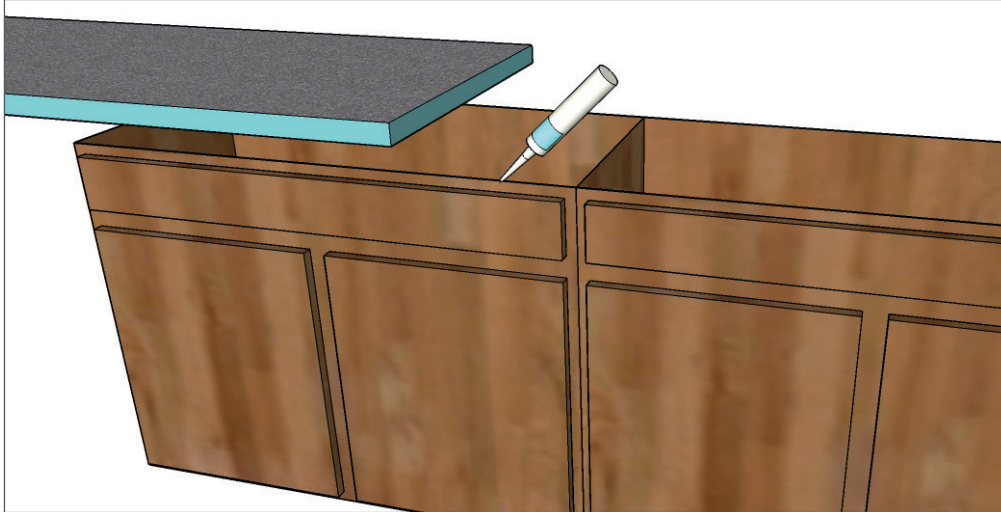


## With Countertop Surfaces

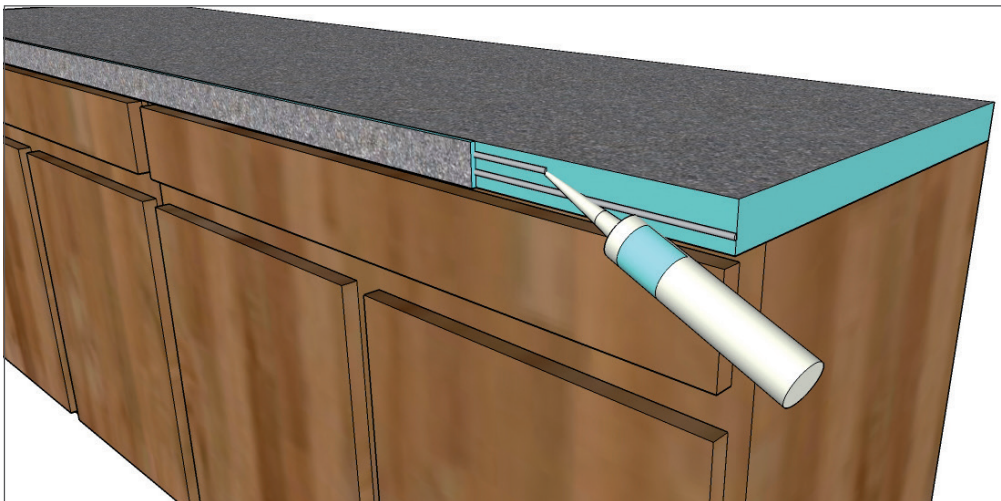
wedi Building Panels are ideal for use as countertop substrates. The wide variety of thicknesses and sizes such as the 2' x 8' or 4' x 8' panels are ideal for simple and fast installations and require no additional support in installation. Install your countertop substrate and be ready-to-tile in minutes. wedi Building panels in 1 1/2" thickness or 2" thickness are ideal for tiling with smaller format mosaic tile or for installation of large format, thin porcelain tile or slab. On the following page, the installation of a large format thin profile porcelain tile is featured.



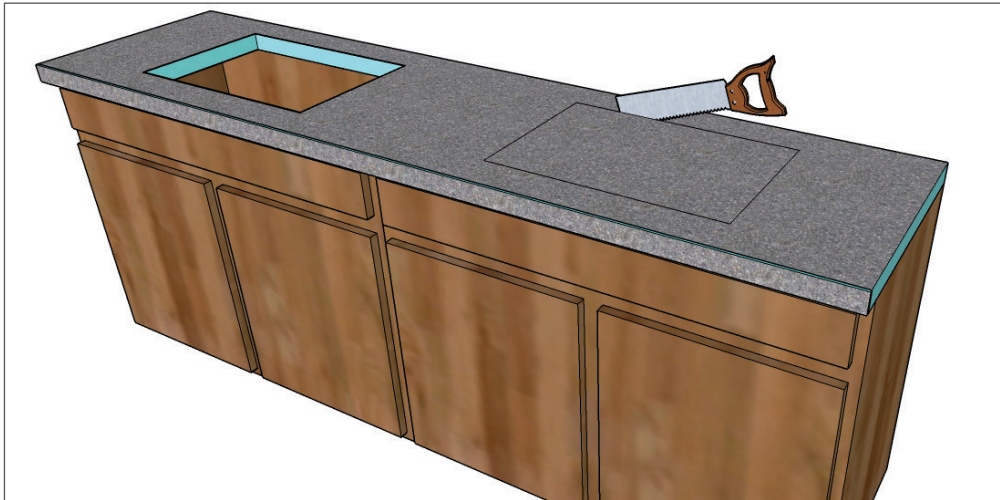
# Installation



- 01** Apply a continuous 1/2" thick bead of wedi Joint Sealant over the spacers of your countertop. Glue down the wedi Building Panel in thickness of 1 1/2" to 2" after you have cut it to size. Leave it recessed behind the front of the counter so you can apply a strip of wedi Building Panel to the exposed foam edge as shown in 02 and still finish flush. Apply some weight equally on the surface for 15 minutes so that the wedi Joint Sealant (a strong adhesive) can set up properly under compression for about 20 minutes.



- 02** Apply wedi Joint Sealant and a strip wedi Building Panel in any thickness starting from 1/8" thick standard wedi Building Panels. This strip's cementitious coating side will allow you to better set small tile.



- 03** Cut out for the sink using a jigsaw or handsaw. As needed, recess cuts might be created with a utility knife or a router to accommodate recessed sinks. Cutting the holes may proceed before or after installation of large format, thin porcelain tile as indicated in step 05.



- 04** Install the large, or small format tile, including thin veneer tile, or stone to the wedi Building Panel surface and edges using a modified thinset.



**05** Apply weight equally distributed across the tile until thinset mortar has set.

#### Installation Tips:

- wedi Building Panels starting with a panel thickness of 1 1/2" can be used over counters without additional plywood support. The wedi panels may overhang at the countertop edges by a maximum of 6 inches if overhang areas are tiled top, front and bottom.
- Some large or irregular shaped countertops will require multiple panels. This makes necessary the use of an edge leveling system to maintain a smooth transition between the large format, thin porcelain tile. For timing and method of installation refer to the edge leveling system manufacturer's instructions.
- In areas where the countertop intersects with the back-splash or other vertical projections through the countertop, differential movement will occur. For these active transitions, most manufacturers recommend the use of a color coordinated 100% silicone caulk for its superior flexibility and adhesion, or when applicable a permanent metal or plastic edge treatment piece can be used.
- Full coverage of bonding mortar is critical for the impact resistance of the installed countertop. It has found that a high speed orbital sander with pad is the best way to evacuate the air and collapse the ridges under the panel. The installation guidelines for floors, including but not limited to, proper trowel and troweling technique (excluding the walk in method for embedding), should be followed for countertops.







# The archant promise

## Fast delivery

---

We can deliver anywhere in New Zealand. All orders\* received before 4:00 pm will be dispatched the same working day.

## Sample service

---

We are more than happy to send you product samples. They will be couriered to your door to help make your choice quick and easy.

## Money back guarantee

---

If you're not completely satisfied with our products, we guarantee to refund you in full within one year of purchase. Products returned must be in new condition, unopened, unused and in original packaging. All our products carry a warranty for your peace of mind.

0800 ARCHANT (0800 272 4268) | [archant.co.nz](https://archant.co.nz)

Showroom | Shop 11, 115 St Georges Bay Road, Parnell, Auckland

Postal | PO Box 2440, Stortford Lodge, Hastings 4120

**archant**